

# NetQues

## The NETQUES project: European speech and language therapy education - united in diversity



Jois Stansfield, Manchester Metropolitan University UK



Zsolt Csefalvay, Comenius University, Bratislava, Slovakia



Kristina Hansson, Lund University, Sweden



Aileen Patterson, CPLOL



Martin Peleman, Artevelde University College, Ghent, Belgium



Baiba Trinite, Liepajas Universitate, Latvia



Eva Wigforss, Lund University, Sweden



# NetQues

## Background

### NETQUES:

Network for Tuning Standards and Quality of Education programmes in Speech and Language Therapy across Europe

Major 3 year EU grant to CPLOL - €+++++

**65** *partners*

**32** *countries*

**25** *languages*



# NetQues

## Aims

- Enhanced quality of SLT education
- Increased co-operation between SLTs in Europe
- Better SLT service for clients



## Objectives

- Define EU-level benchmarks for SLT education and clinical competencies
- Establish common SLT vocabulary across EU
- Harmonise standards of SLT education

thus

- Help reduce inequalities of care provided for SLT clients in Europe



## Approach

‘Tuning’ methodology: clarify and compare curricula

### 5 levels – identify:

- academic competencies
- subject-specific competence
- ECTS accumulation system
- approaches to learning, teaching and assessment
- quality enhancement in the educational process

<http://tuning.unideusto.org/tuningeu>



Lifelong Learning Programme

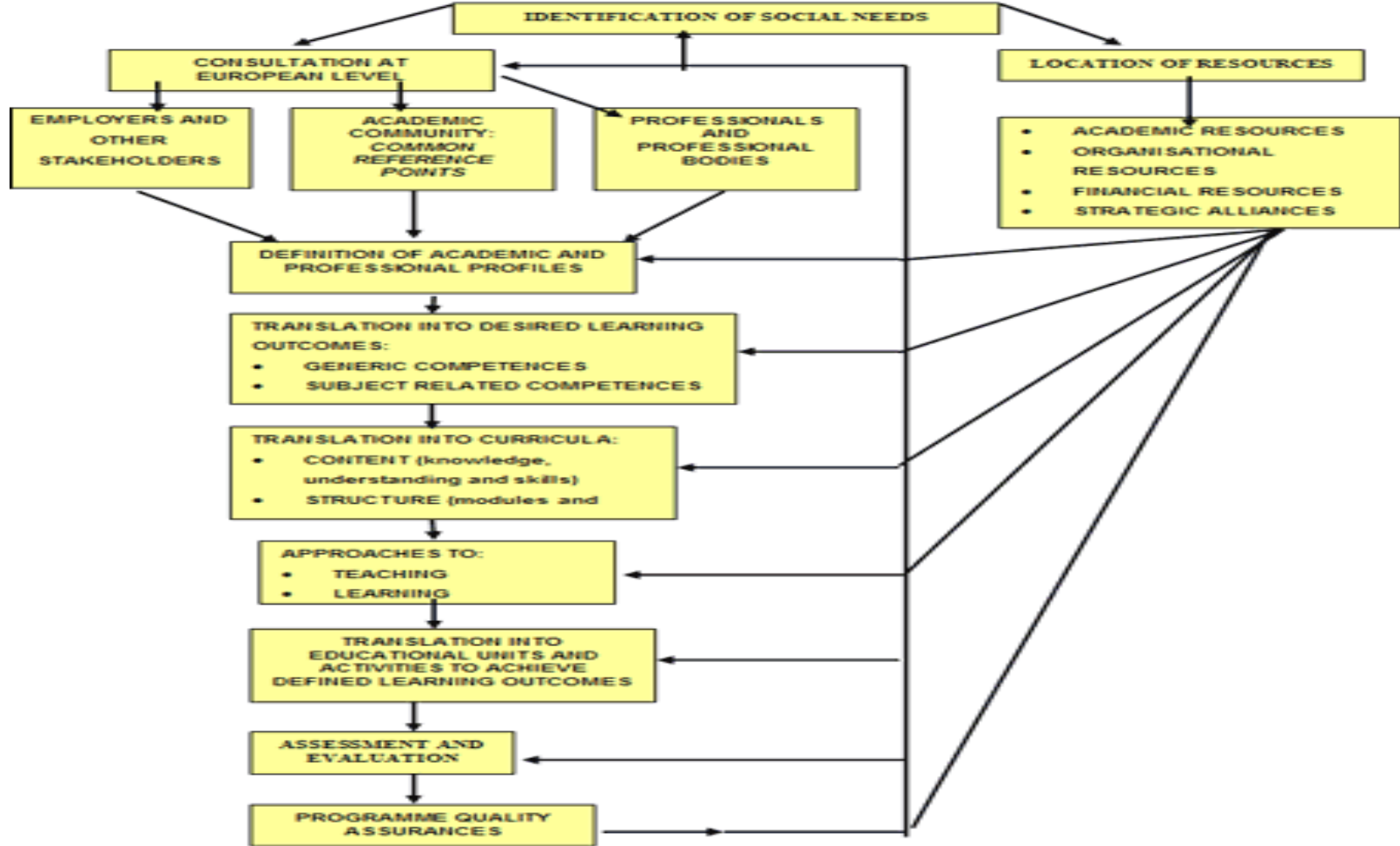


Education and Culture DG



Education, Audiovisual & Culture  
Executive Agency

## THE TUNING MODEL FOR EUROPEAN COMPARABLE DEGREES



© Tuning Project



## Organisation

Coordinated by CPLOL (experience in working with EU members across cultures and languages).

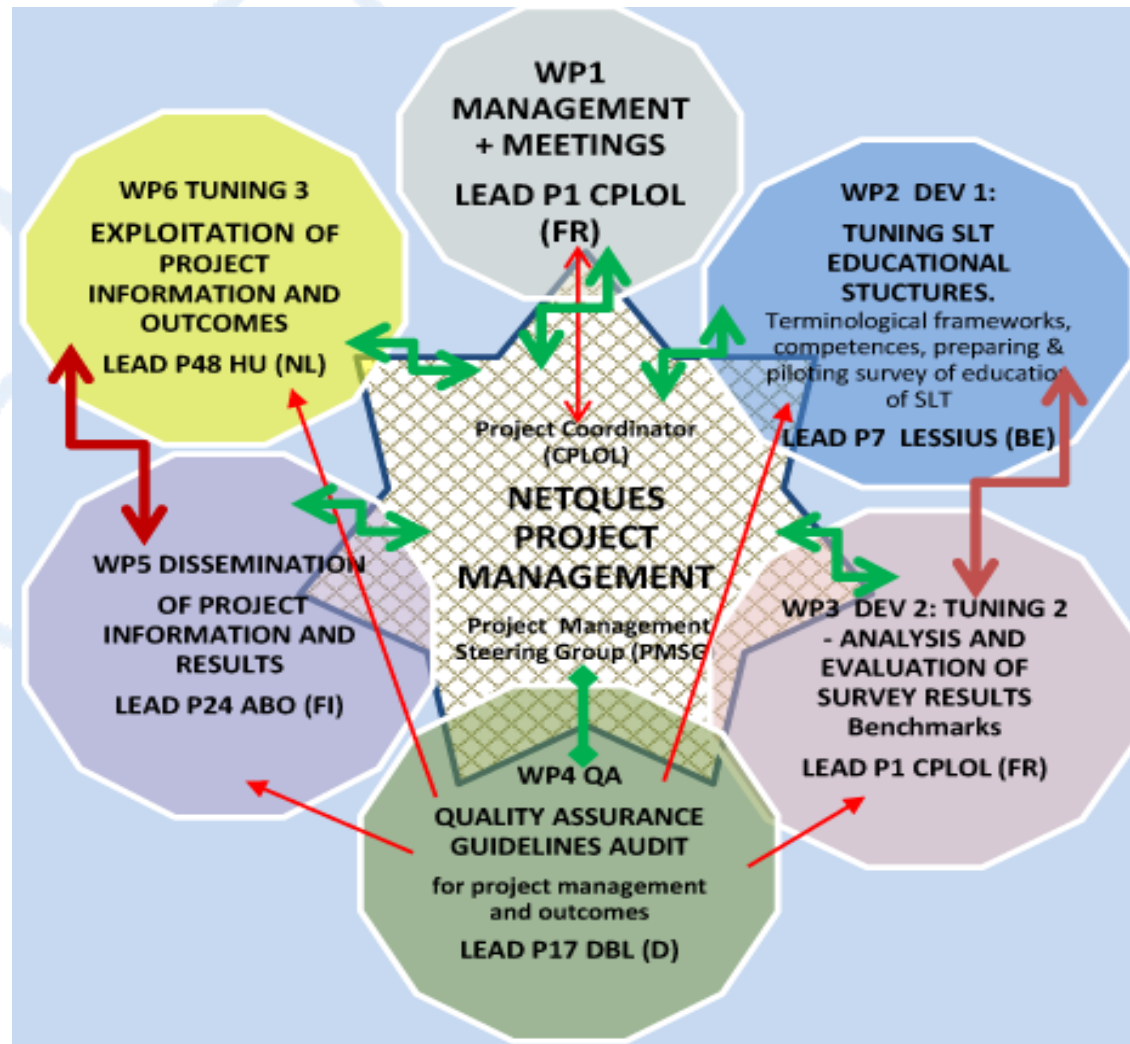
Six 'work packages' (WPs) reflect stages of Tuning process

WP1 steering group	(leadership)
WP2 development	(of surveys)
WP3 analysis	(of surveys)
WP4 quality assurance	(monitor)
WP5 dissemination	(share)
WP6 exploitation	(use for development)

<http://tuning.unideusto.org/tuningeu>



## Organisation: organogram





## Activities to date: *the more exciting ones....*

- SLT competencies generated
- Glossary of terms devised
- Survey 1 instrument developed, translated into all 25 languages and distributed online (survey monkey)
- Electronic database of key information provided to all partners
- Methodology of Survey data analysis agreed
- Exploitation plan devised



## Activities to date: ..... *the less exciting but necessary ones*

- Finance management
- Partner contracts
- Risk management procedures
- Quality guidelines developed and implemented
- Half way report completed and submitted to EU



## Results to date

- Survey 1: **4383 responses from 30/32 countries** (every EU participant country, plus 2 others). Respondents: students/ new graduates; clinicians/ employers; academic SLTs
- 2864 complete surveys available for analysis (others only partially completed)
- Statistical data analysis almost complete



Lifelong Learning Programme



# NetQues

## Communication to date

### Restricted to partners:

Website intranet and web master

Face to face and virtual communication (Skype, email, Dropbox) within and between WP groups

Inaugural and annual project meetings



# NetQues

## Communication to date

### Public:

Logo

Leaflet

Newsletter

Website [www.netques.eu](http://www.netques.eu) 1500 hits a month

Poster at ASHA

Papers invited at 2 national conferences

This presentation at CPLOL congress

Paper submitted to RCSLT conference



## Moving forward....

- Survey 2 on SLT education devised and circulated to SLT educational establishments (May 2012). English only
- Survey 3 (CPLOL/NETQUES survey) on student numbers, staffing. English and French
- Analysis
- Dissemination
- Exploitation ..... ***watch this space***



# NetQues

## Acknowledgements

This project is funded by the European Commission's ERASMUS Life Long Learning Programme through the Education Audiovisual and Culture Executive Agency (EACEA)

This presentation reflects the views only of the authors. The European Commission cannot be held responsible for any use which may be made of the information contained therein.

Thanks to all partners and others who have contributed to the project so far

Thanks to the Health Professions Council for supporting JS to attend the conference

